

EY-Parthenon research

Background

In the commercial diligence EY experience with private equity (PE) firms, EY-Parthenon teams frequently encounter questions about how best to align potentially divergent interests between health care companies and PE firms. As a result of our research, they have found:

- ▶ Health care PE activity has grown substantially
- ▶ Returns have been attractive to PE firms

These findings raise the question:

What do health care companies think about PE investment?

About the study

This study was conducted between July and November 2017, comprising an online, self-administered survey of 84 executives who were either currently working or had recently worked at a private equity-backed health care company in the United States; a follow-up survey of 49 respondents (in November 2017) providing further detail; and in-depth interviews with 12 current and former health care executives.

More than 80% of respondents were C-suite executives, including CEOs, CMOs, CFOs and COOs, and a similar percentage had experienced two or more rounds of PE investment.

About the authors



Dan Shoenholz

Managing Director
Co-head of Health Care
EY-Parthenon
Ernst & Young LLP
+1 212 773 4517
dan.shoenholz@parthenon.ey.com

Dan is a managing director in EY-Parthenon New York member firm office and the co-head of Health Care services. He has more than 20 years of experience in corporate and growth strategy, commercial due diligence, performance improvement and change management.



Peter Gates

Executive Advisor
EY-Parthenon
Ernst & Young LLP
+1 617 478 4611
peter.gates@parthenon.ey.com

Peter brings more than 25 years of experience in health care to his role as an executive advisor in EY-Parthenon Health Care services. He was a founding partner of MedEquity Capital, a health care private equity firm, and previously held senior leadership positions at GE Healthcare and Concentra, Inc.

EY | Assurance | Tax | Transactions | Advisory

About EY

EY is a global leader in assurance, tax, transaction and advisory services. The insights and quality services we deliver help build trust and confidence in the capital markets and in economies the world over. We develop outstanding leaders who team to deliver on our promises to all of our stakeholders. In so doing, we play a critical role in building a better working world for our people, for our clients and for our communities.

EY refers to the global organization, and may refer to one or more, of the member firms of Ernst & Young Global Limited, each of which is a separate legal entity. Ernst & Young Global Limited, a UK company limited by guarantee, does not provide services to clients. For more information about our organization, please visit ey.com.

EY-Parthenon is a brand under which a number of EY member firms across the globe provide strategy consulting services.

© 2018 Ernst & Young LLP. All Rights Reserved.
EYG no. 012195-18Gb1

ED None

This material has been prepared for general informational purposes only and is not intended to be relied upon as accounting, tax or other professional advice. Please refer to your advisors for specific advice.

ey.com



Can private equity be an effective provider to health care companies?

Learn more from an EY-Parthenon survey of health care executives.

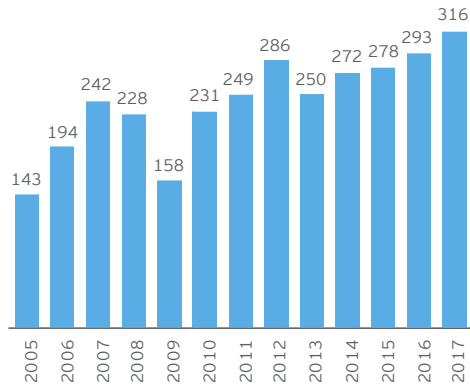


December 2018
EY-Parthenon
Ernst & Young LLP

Can private equity be an effective provider to health care companies?

Private equity presence

1 PE deal volume in health care has grown substantially.



Source: EY-Parthenon analysis of CapIQ data

2 PE's presence in sector-leading companies* is pervasive.

Of the top 10 companies in each sector, number with PE backing**

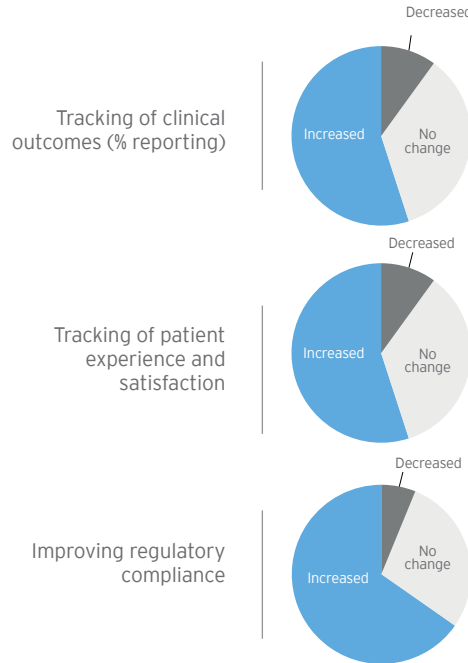
Dental	10
Dermatology	10
Physical therapy	9
Urgent care	8
Eating disorders	7
Substance abuse treatment	6
Emergency department staffing	6

* Measured by the total number of (US) facilities
 ** At any point in the company's history

Source: EY-Parthenon research and analysis

The views of health care executives

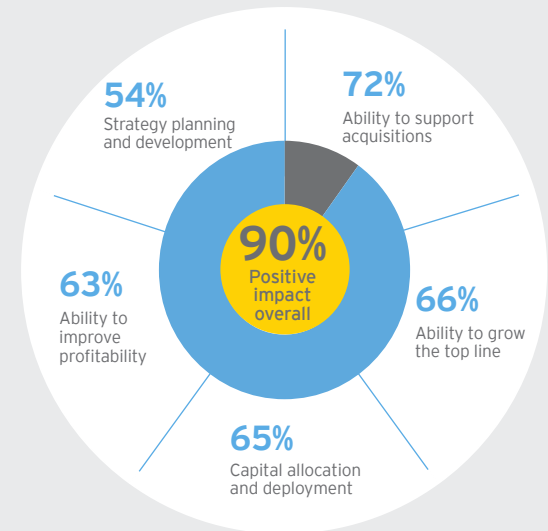
3 Most executives reported increased investment in clinical metrics and compliance systems by PE investors ...



4 ... and 80% said their clinical staff had positive or neutral views of PE.



5 Health care executives gave PE high marks on multiple fronts, and 90% said PE had an overall positive impact on their business.



6 Surveyed executives are highly likely to consider future PE investments.

Q: "How likely are you to consider a PE investment for your current company or in a different company, where 0 = not at all likely and 10 = extremely likely?"

